

BLAKEBROOK PUBLIC SCHOOL

LANDSCAPE DOCUMENTATION FOR DA2 APPROVAL

Prepared by:
Taylor Brammer Landscape Architects Pty Ltd

Drawing List DWG NO.

DWG NO.	DRAWING TITLE	SCALE
0001	Landscape: Cover Sheet	NTS@A1
0010	Landscape: Concept Plan	1:250@A1
0011	Landscape: Tree Retention And Removal Plan	1:250@A1
0020	Landscape: Section Elevations	1:150@A1
0030	Landscape: Planting Approach	NTS@A1



LOCATION PLAN
NTS @ A1

AMENDMENTS			
REV	BY	DATE	DESCRIPTION
A	BH	31/08/2023	For Coordination
B	JS	07/09/2023	Draft REF Issue
C	JS	14/09/2023	For DA Approval
D	JS	27/10/2023	For DA2 Approval

CLIENT DETAILS

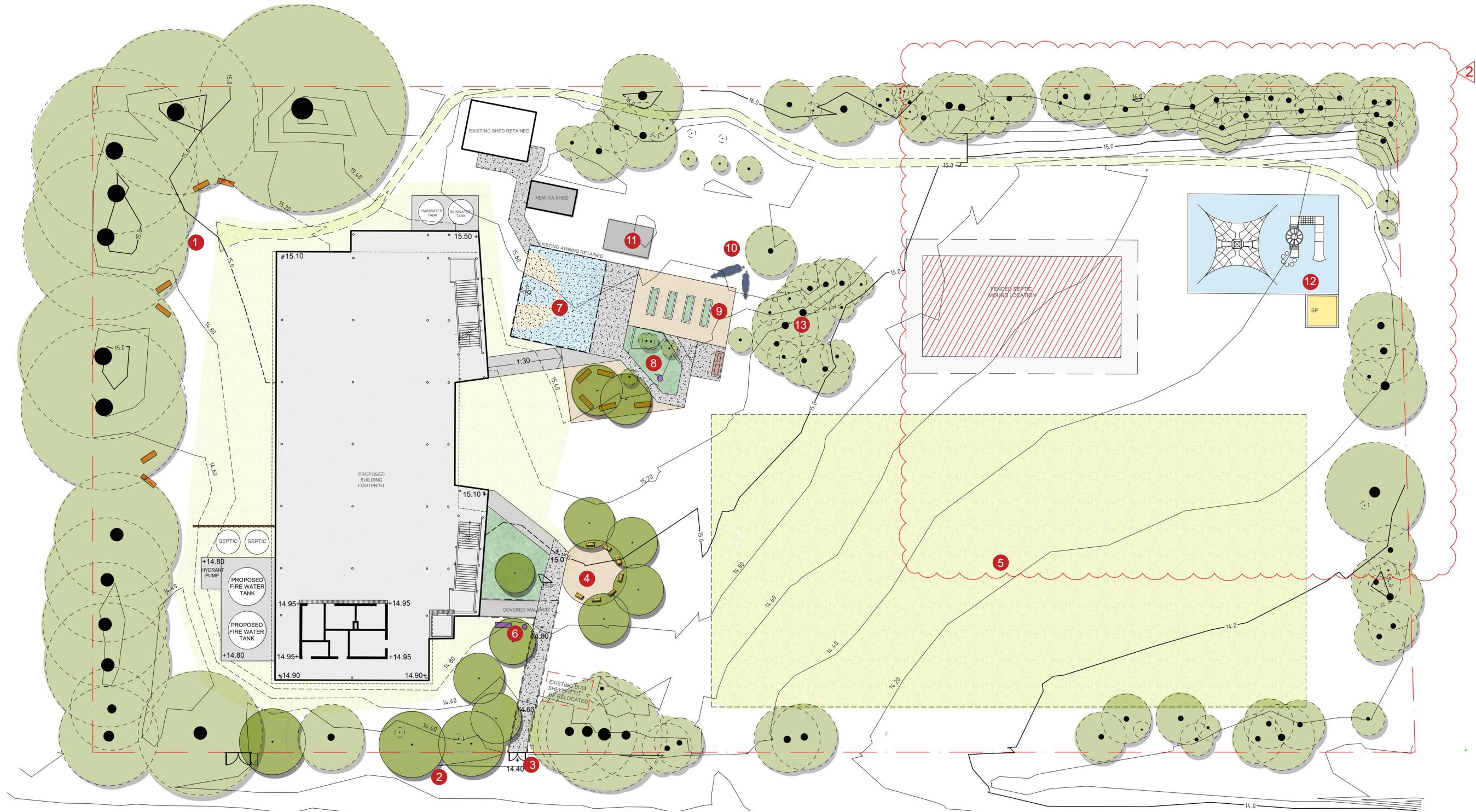


DRAWING NAME
LANDSCAPE: COVER SHEET

PROJECT
BLAKEBROOK PUBLIC SCHOOL
417 ROSEHILL ROAD BLAKEBROOK NSW
2480



PROJECT DISCIPLINE PHASE TYPE SERIES NUMBER				
BLA - LAN- DA-DWG- 0001				



LEGEND

- Site boundary
- Existing contour
- Proposed Contour
- Spot levels
- Trees to be retained
- Proposed trees
- New turf
- Concrete paving
- New mass planting
- Sand
- Decomposed Granite
- Grassed drainage swale to engineers detail
- 2000mm long sandstone log seating
- 1000mm long sandstone log seating
- Growing gardens
- Heritage items
- Existing BBQ to be retained
- Septic mound to engineers detail

DIALOGUE

- 1

Seating placed near existing Camphor laurel trees to provide a shaded space for small groups to gather
- 2

Informal cluster of new trees planted near the main entry to soften the new building and help strengthen the entry to the school
- 3

Existing letterbox retained to strengthen existing character of the school
- 4

Yarning circle to support outdoor learning opportunities for small groups to Connection to Country
- 5

New sports field to allow for flexible sports activities
- 6

Heritage bell and memorial seat relocated to define the pedestrian entry to the building
- 7

Existing hard court and COLA retained
- 8

Existing garden and flag poles retained
- 9

Raised growing garden for education about food and indigenous planting
- 10

Existing Cow sculptures retained and relocated amongst the agricultural setting of growing gardens and fruit trees
- 11

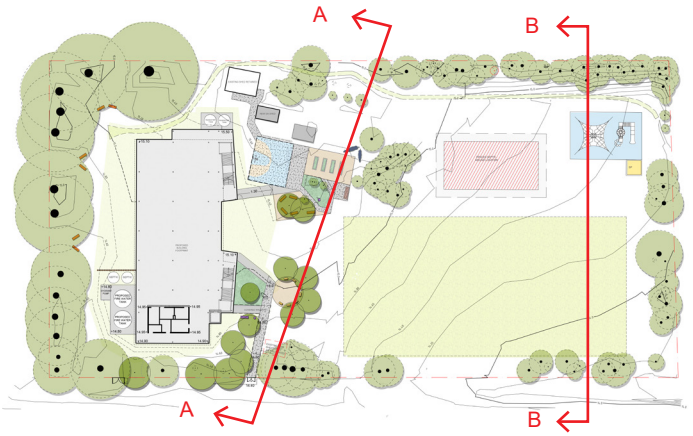
Existing bus shelter relocated to provide shaded structure to games court and growing gardens
- 12

New "like for like" replacement playground and relocated sand pit
- 13

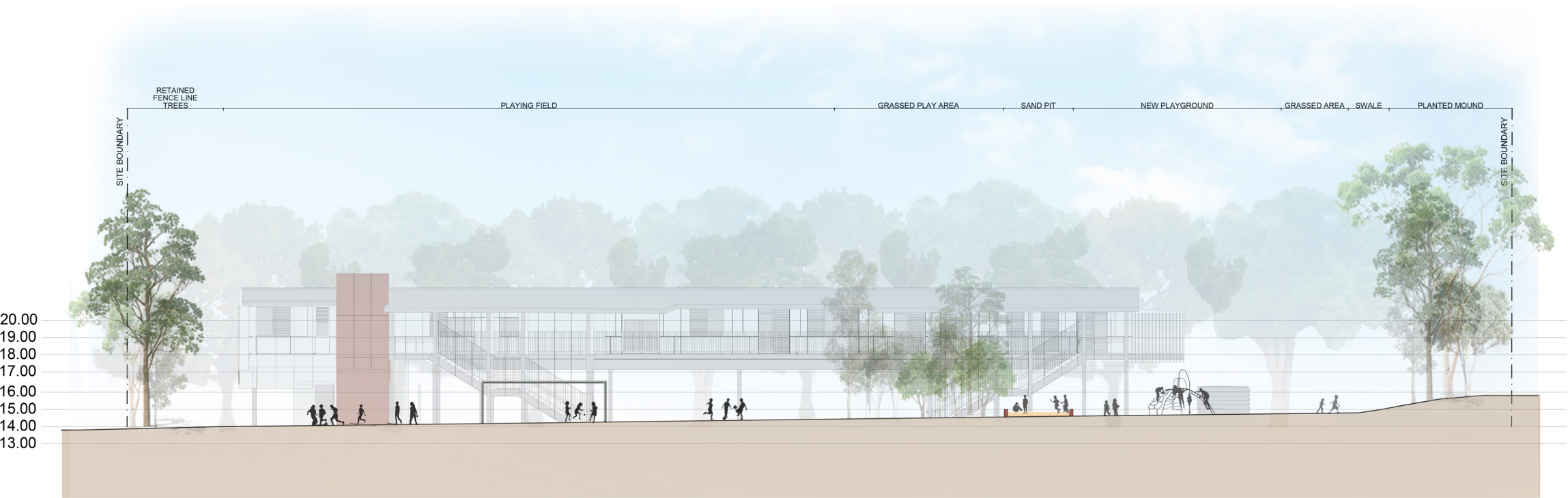
Existing fruit and citrus trees retained next to growing gardens



SECTION/ ELEVATION AA
1:150 @ A1



KEY PLAN



SECTION/ ELEVATION BB
1:150 @ A1

AMENDMENTS				DESCRIPTION
REV	BY	DATE		
A	BH	31/08/2023		For Coordination
B	JS	07/09/2023		Draft REF Issue
C	JS	14/09/2023		For DA Approval
D	JS	27/10/2023		For DA2 Approval

CLIENT DETAILS

TaylorBrammer
TAYLOR BRAMMER LANDSCAPE ARCHITECTS PTY LTD
AUSTINER STUDIO
26 Mares St PO Box 3044 Adelaide, NSW, 5010 E: enquiries@taylorbrammer.com.au T: 08 2 5657 0800
Copyright © Taylor Brammer Landscape Architects Pty Ltd ABN 61 008 724 988

DRAWING NAME
**LANDSCAPE: SECTION
ELEVATIONS**

PROJECT
BLAKEBROOK PUBLIC SCHOOL
417 ROSEHILL ROAD BLAKEBROOK NSW
2480



0 2500 5000 7500 10000 12500 25000
SCALE 1:150 @ A1
27/10/2023
PROJECT DISCIPLINE PHASE TYPE SERIES NUMBER
BLA - LAN- DA-DWG- 0020

PLANTING SCHEDULE

PLANTING IMAGERY

PLANTING STRATEGY

SYMBOL	BOTANICAL NAME	COMMON NAME	HEIGHT	WIDTH	ENTRY	YARNING	FLAG POLE	BUNDJALUNG
	TREES							TRADITIONAL USE
ATR	<i>Argyrodendron trifoliolatum</i>	White Booyong	25m - 30m	8m - 9m				
CIN	<i>Corymbia intermedia</i>	Pink Bloodwood	25m - 30m	7m - 8m				
CGL	<i>Cryptocarya glaucescens</i>	Jackwood	25m - 30m	5m - 6m				
EAC	<i>Ehretia acuminata</i>	Koda	8m - 10m	4m - 5m				
EMU	<i>Endiandra muelleri</i>	Green-leaved Rose Walnut	25m - 30m	15m - 18m				
EMI	<i>Eucalyptus microcorys</i>	Tallow wood	40m - 45m	12m - 15m				
GRO	<i>Grevillea robusta</i>	Silky Oak	15m - 18m	5m - 6m				
LCO	<i>Lophostemon confertus</i>	Brush Box	15m - 18m	9m - 10m				
PAU	<i>Planchonella australis</i>	Black Apple	13m - 15m	15m - 18m				
SIN	<i>Syzygium ingens</i>	Red Apple Lilly Pilly	25m - 30m	8m - 9m				
TCI	<i>Toona ciliata</i>	Red Cedar	13m - 15m	2m - 3m				
CVI	<i>Callistemon viminalis</i>	Weeping Bottlebrush	3m - 4m	2m - 3m				
	SHRUBS							
HHE	<i>Hibiscus heterophyllus</i>	Native Rosella	4m - 5m	2m - 3m				
BOB	<i>Breynia oblongifolia</i>	Coffee Bush	2m - 3m	1.5m - 2m				
MAF	<i>Melastoma affine</i>	Blue Tongue	2m - 3m	1m				
CPE	<i>Crinum pedunculatum</i>	Swamp Lily	1m - 1.5m	2m - 3m				
ACA	<i>Alpinia caerulea</i>	Dargahn / Native Ginger	1.5m - 2m	1m				
	GROUNDCOVERS							
DRE	<i>Dichondra repens</i>	Kidney Weed	0.1m	1m - 1.5m				
HSC	<i>Hibbertia scandens</i>	Guinea Flower, Snake Vine	1m	4m - 5m				
PVA	<i>Pseuderanthemum variables</i>	Pastel Fower	0.3m	0.7m - 0.9m				
BIN	<i>Blechnum indicum</i>	Swamp Water Fern	0.8m	0.4m - 0.6m				
LMI	<i>Lygodium microphyllum</i>	Climbing Maidenhair Fern	0.2m	2m - 3m				
VHE	<i>Viola hederacea</i>	Native Violet	0.2m	0.1m - 0.3m				
	GRASSES							
LLO	<i>Lomandra longifolia</i>	Mat Rush	1m	1m				
TAU	<i>Themeda australis</i>	Kangaroo Grass	1m	1m				
DCA	<i>Dianella caerulea</i>	Paroo Lily	0.8m	1m				
LHY	<i>Lomandra hystrix</i>	Creek Mat Rush	1m	1m				



Corymbia intermedia



Callistemon viminalis



Argyrodendron trifoliolatum



Eucalyptus microcorys



Grevillea robusta



Syzygium ingens



Hibiscus heterophyllus



Breynia oblongifoli



Melastoma affine



Crinum pedunculatum



Dianella caerulea



Alpinia caerulea



Lomandra hystrix



Themeda australis



Doodia aspera

Species have been selected to serve the Connecting to Country site narrative for Blakebrook Public School, drawing upon several sources, listed below. Plants with documented traditional Bundjalung uses are highlighted in the table. Fast-growing *Grevillea robusta* will provide a bird and insect friendly screen for raised buildings. The existing flagpole garden will be improved with architectural rainforest plants and a tall, spreading canopy of endemic gums. The Yarning Circle will feature a diverse stand of rainforest trees such as the White Booyong, and underplantings with rich biological, aesthetic and cultural value .

Other references include:

-The Lismore City Council Landscape Guidelines (2007) provides recommendations for general planting as well as specificec species for planting close to Goolmangar Creek;

-My Local Native Garden Guide, Lismore floodplains section (2016) lists plants appropriate for this particular flood-prone area;

-The Ecological Assessment Report for Blakebrook Public School prepared by Kleinfelder (2022) specifies a patch of remnant PCT 4046 - Northern Lowland Swamp Turpentine-Red Gum Forest.

-Revive the Northern Rivers “The Big Scrub” accessed 09/2023

AMENDMENTS			
REV	BY	DATE	DESCRIPTION
A	BH	31/08/2023	For Coordination
B	JS	07/09/2023	Draft REF Issue
C	JS	14/09/2023	For DA Approval
D	JS	27/10/2023	For DA2 Approval

CLIENT DETAILS



DRAWING NAME

LANDSCAPE: PLANTING
APPROACH

PROJECT

BLAKEBROOK PUBLIC SCHOOL
417 ROSEHILL ROAD BLAKEBROOK NSW
2480



0 2500 5000 7500 10000 12500 25000				
NTS @ A1				
27/10/2023				
PROJECT	DISCIPLINE	PHASE	TYPE	SERIES NUMBER
BLA	LAN	DA	DWG	0030